

STUDENT TRACKING SYSTEM FOR PARENTAL CONTROL

By M- Tech Innovations LTD.

www.m-techindia.com

Problem:

- Guardians always concerned of the safety of children
- School children are not allowed to carry cell phones to school
- Not feasible for the school authorities to call each parent
- For working parents another situation of concern is whether their children have reached home in time after the school or not
- Schools and teachers can face significant challenges trying to keep track of hundreds of students and assure their safety while simultaneously teaching them something.

Tracker + RFID : Complete Solution

- Tracker as a way to know geographical position
- RFID as a way to identify individual item/persons
- RFID + Tracker :
It is combination of Hand held or stand alone reader enabled with GPS/GPRS/SMS gateway and RFID which sends transactions details of every individual to backend server & then to parents.
- Complete process is show in subsequent slides.
- Optional GPS device can be fitted inside the school bus for tracking the movement & stops.

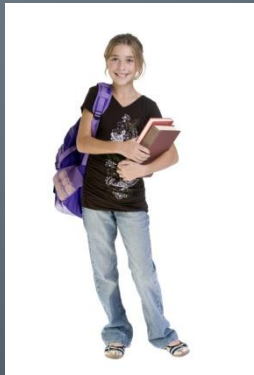
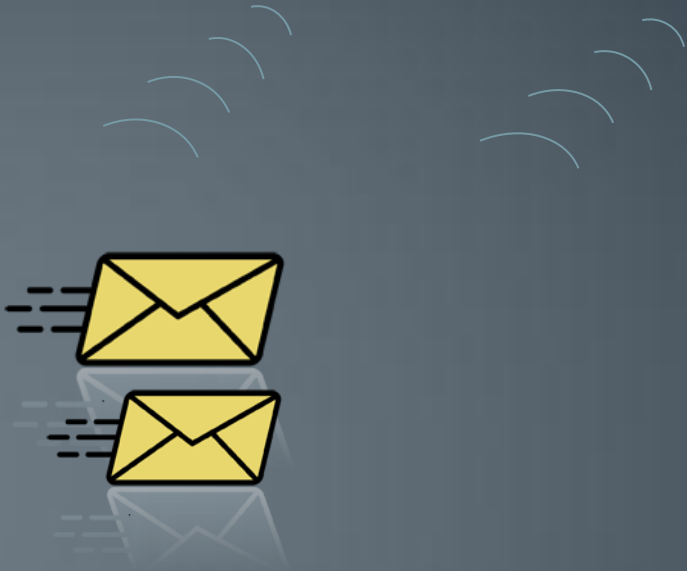
Benefits to Parents and to Schools

- Benefits to the parents :
 - They will aware about the each and every movement of his child from home to the school and vice versa
 - They will get the alert from where their child boards and where alight with timing information.
- Benefits to the school :
 - Whether Students boarded in Bus
 - Attendance get marked of each student
 - No need of call to the parent for no presence of his child in the school

Complete process of the System

- Every student is assigned a Unique Tag ID in RFID smartcard
- Student Boards Bus
- Student's RFID card is read by Hand-held Reader / Stand alone reader fitted inside the BUS
- GPS Technology used to get updates on student's real time location (GIS Location).
- Student information , time and boarding location information sent to Remote Server using GPRS technology.
- Student Alights and RFID smartcard is read again through Hand held reader / stand alone reader.
- Student again use the same RFID card for attendance inside the school
- Remote Server automatically sends SMS with updated information to parents.

STUDENT TRACKING SYSTEM FOR SCHOOL



RFID STUDENT TRACKING SYSTEM for School Bus



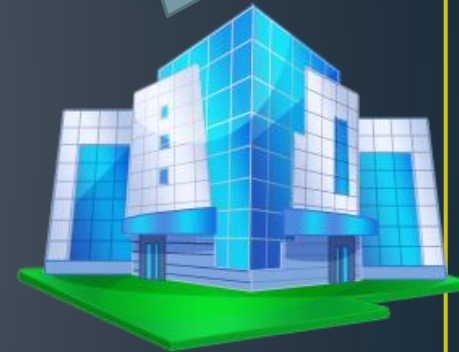
Manish :

Entered bus MH BE 1234 at 10:20
am near Main Junction

Reached School @ 11:30 am

SMS To
Mother

EMAIL to
Father



RFID School Bus System: Alerts



To Rajiv's Mother:

Rajiv did not enter the scheduled school bus at Post Office Point



To Riya's Father:

Riya got out of the Bus at Bremen Point.
Scheduled Stop was set as PU university



To All Parents & School Admin:

Bus delayed by 30 mins.
Currently at Deccan

Conclusion

- Tracker has a lot of potential in helping in many facets of our personal and work environment. If we bring the RFID solution together with the Tracker, it will give us the better and proven student tracking application.
- Tracker + RFID solution can help provide safety to child. Along with this it will also help in increasing the efficiency of a system.
- We are sure that investing such a solution for schools will help in more ways than are currently evident.

Content of the Complete solution

- RFID and GPS Enabled Hand Held Terminal (MTHHT) or
- RFID and GPS Enabled Standalone reader (MTC) for each bus
- Stand alone RFID time attendance reader for class rooms
- RFID card for each students
- Application software for student tracking system for parental control

THANK YOU !

For M-Tech Innovations Ltd.

Email : smartcards@m-techindia.com

Mob : 9822707859